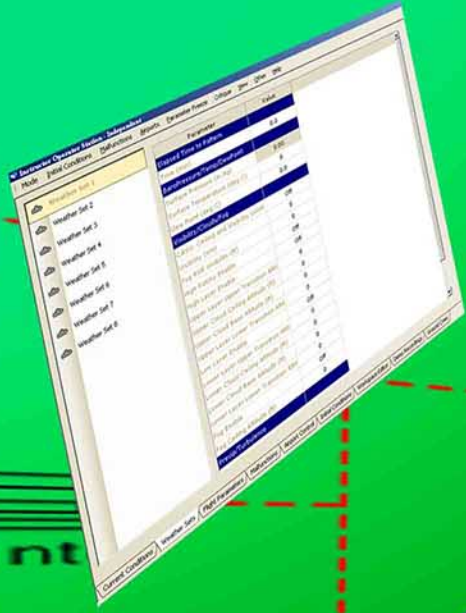


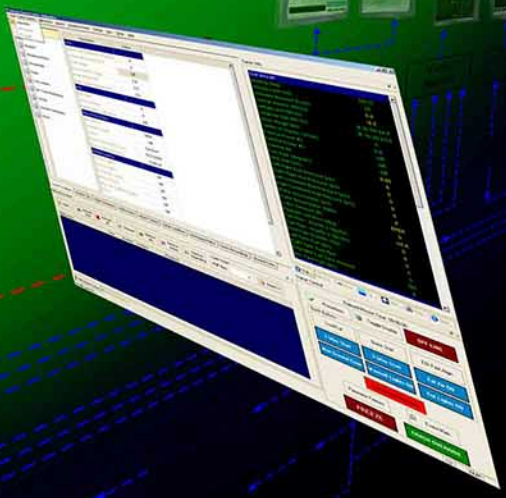
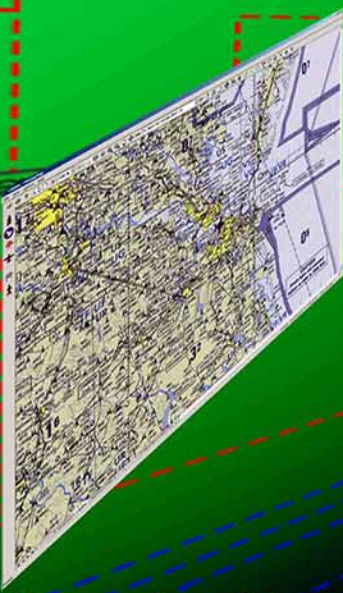
INSTRUCTOR
OPERATOR
STATION



SimCom

Observer

Ether
Sw



- Rapid Upgrade of Legacy IOS Systems
- Delivered on Rotary and Fixed Wing Trainers
- Full Control of Trainer Functionality & Environment
- Photo-Realistic Aircraft Instrumentation
- Crew Progress Tracking:
 - Checklists
 - Emergency Procedure
- Detailed Navigation Displays:
 - Geographic Map
 - Topographical Map
 - Navigational Chart
 - Navigational Aids, Airports, and Routes
- Full Featured Malfunction Control
- Tablet PC Format Available
- Instrumentation
- Complements ASI's Flight Brief/Debrief System



ASI'S INSTRUCTOR OPERATOR STATION

Overview

- A versatile, comprehensive and intuitive tool that provides full control of trainer functionality and the training environment
- A mature, proven ASI system that has been fielded on numerous fixed and rotary wing flight and maintenance trainers, including:
 - Fixed Wing - C-2A, E-2C, E-2D, HU-25 and T-44A,
 - Rotary Wing - HH-65, HH-60, CH-53E, CH-46E, MH-60R/S and AH-64D.
- Designed for new trainers and to support rapid replacement of legacy IOS systems
- Provides the latest technology for student performance tracking, evaluation and record keeping, accelerating the accomplishment of defined training objectives

Technology and Interfaces

- Available as a Commercial-Off-The-Shelf (COTS) ASI product
- Can be tailored for program specific requirements
- Based upon the Microsoft Visual C++.net development environment running on Windows XP
- Uses the latest in display, processing and interconnectivity technology
- Host Computer interfaces through fiber optic reflective memory or Ethernet connections
- Supports typical Information Assurance requirements
- Easily integrates with Training Management Systems for student recording keeping

Functionality

- Main Page provides full control of trainer functionality and training scenario
- Provides Initial Conditions and Environmental controls
- Full featured Malfunction controls allow Instructors to focus on training and Student evaluation, not just upon IOS operation
- Procedures Page allows an Instructor to monitor and comment upon crew progress on Checklists and Emergency Procedures
- Moving Map and Navigation Pages provide high resolution maps with ownship and targets accurately depicted, improving navigational awareness
- Navigation Page can be displayed as geographic or topographical maps, or navigational chart, including navigational aids, airports, and routes
- Another window provides a high resolution, photo-realistic graphical depiction of aircraft instruments
- Daily Operational Readiness Test (DORT) Page provides a full set of training system test and diagnostic tools

Options

- Available in a Tablet PC format – Supplementing or replacing a fixed IOS, providing Instructor, Student and Maintainer flexibility in trainer operation and troubleshooting



4450 East Adamo Drive
Suite # 501
Tampa, FL 33605-5941
(813) 628-4447
www.aerosimulation.com

ISO 9001:2008 Certified

